

Claw Clamp with Hex. Socket Cap Screw

INFICON ISO-KF fittings are manufactured according to ISO 2861/1, DIN 28403 and Pneurop 6606. Our quality fittings are the standard components for all vacuum and high vacuum applications. The high quality INFICON components are designed and tested for leak rates less than 1×10^{-9} mbar l/s.

BENEFITS

- Competitively priced
- Design and measures follow strictly international respected standards
- World wide logistics
- 2011/65/EU RoHS compliant



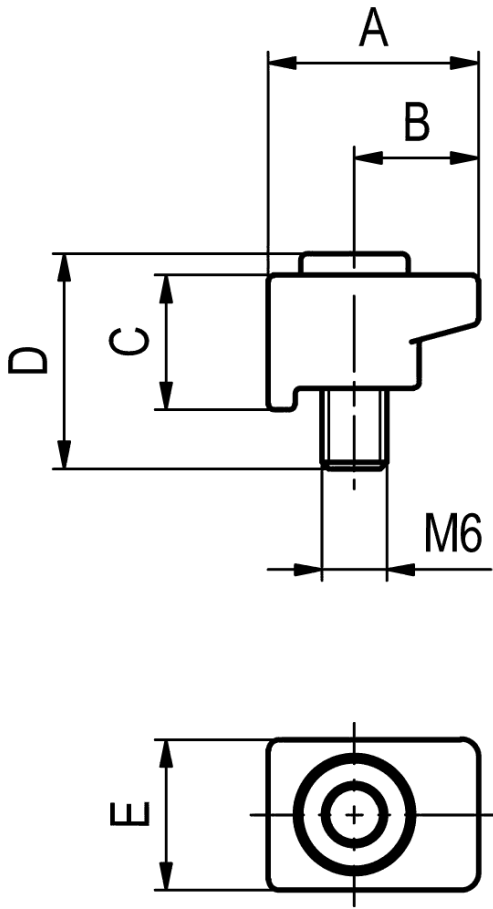
ORDER INFORMATION

Type	DN 10 - 50 ISO-KF
Claw clamp DN 10-50 ISO-KF, 4 pcs.	211-040

SPECIFICATIONS

Type		DN 10 - 50 ISO-KF
Dimension A	mm	19.5
Dimension B	mm	11.5
Dimension C	mm	12.5
Dimension D	mm	20
Dimension E	mm	14
Set of		4 pcs
Claw		Aluminum
Screw		Stainless steel

DIMENSIONS



www.inficon.com reachus@inficon.com

Due to our continuing program of product improvements, specifications are subject to change without notice. RateWatcher is a trademark of INFICON. All other trademarks are the property of their respective owners.

(2018-10) © 2018 INFICON